



La Brecque Phillippe | Alderney | GY9 3TJ

£275,000





A delightful 3 double bedroom town house located on the town outskirts, with a south west facing garden to the rear.



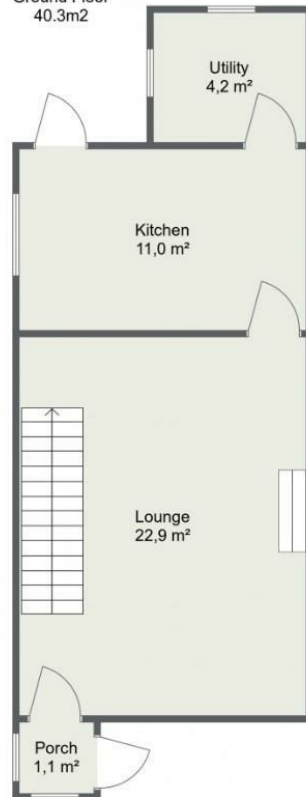
The property has an open plan lounge/dining room, a fitted kitchen and utility room, 3 double bedrooms and a house bathroom.

It has an oil fired central heating system and is fully double glazed.

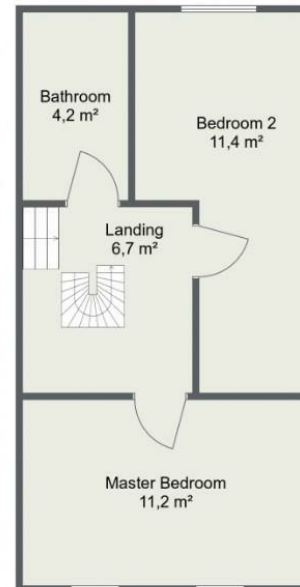


4 La Brecque 1. Floor

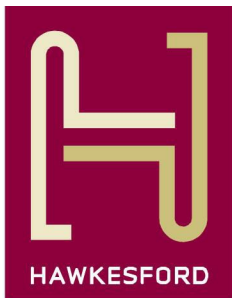
Ground Floor
40.3m²



1st Floor
35.2m²



2nd Floor
18.9m²



1 The Hughes, 24 - 26 Swan Street, Warwick, CV34 4BJ
warwick@hawkesford.co.uk

01926 411 480 www.hawkesford.co.uk

IMPORTANT: we would like to inform prospective purchasers that these sales particulars have been prepared as a general guide only. A detailed survey has not been carried out, nor the services, appliances and fittings tested. Room sizes should not be relied upon for furnishing purposes and are approximate. If floor plans are included, they are for guidance only and illustration purposes only and may not be to scale. If there are any important matters likely to affect your decision to buy, please contact us before viewing the property.